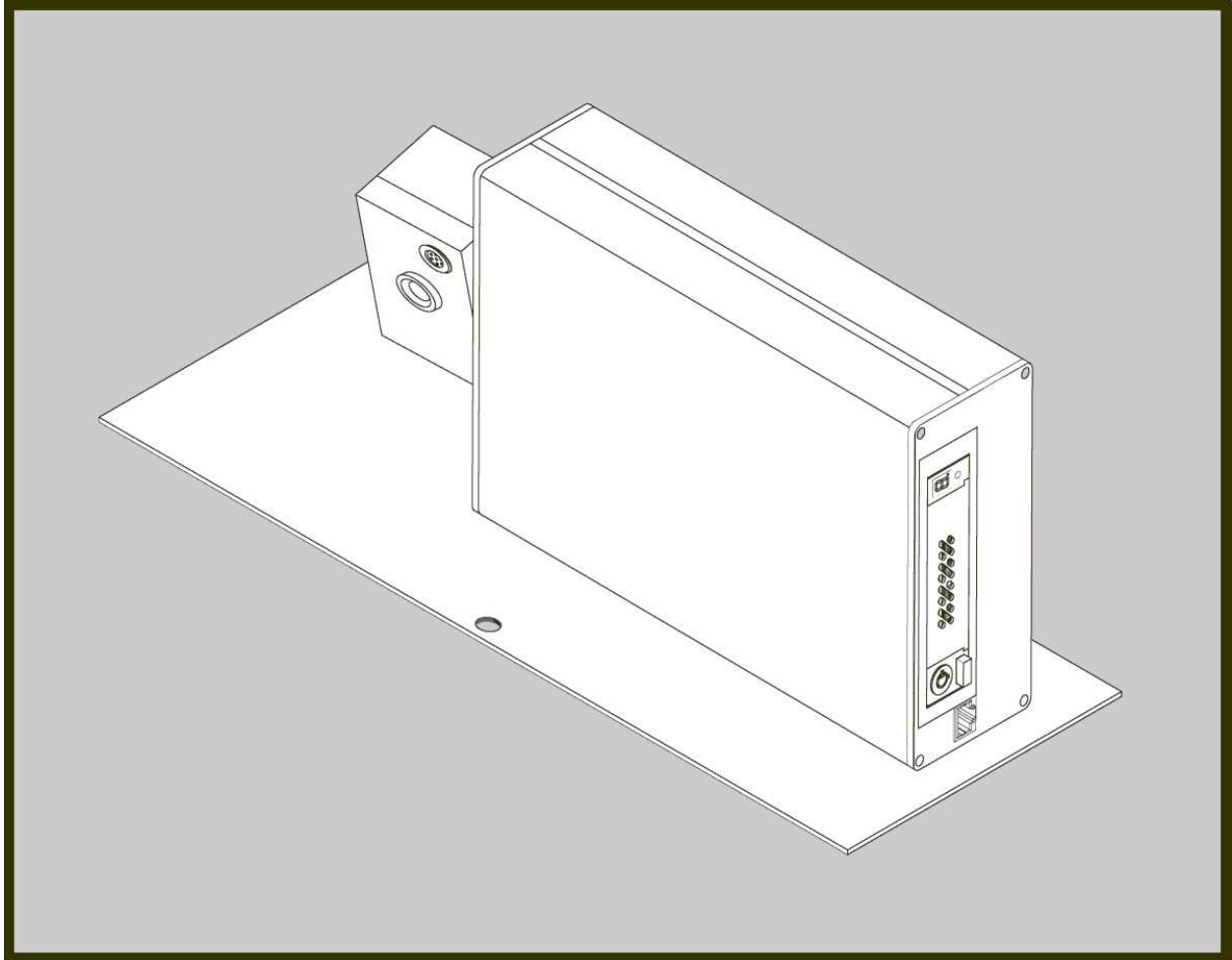


# DIGITAL 7200

## Mobile Digital Video Recorder

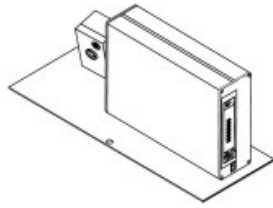


### Quick-Start Instruction Manual

**RTI** **ROBOTICS**  
**TECHNOLOGIES, INC.**  
20655 BURL COURT JOLIET, IL 60433  
VOICE: (815) 722-7650 FAX: (815) 722-7665

# Unpacking the Digital 7200

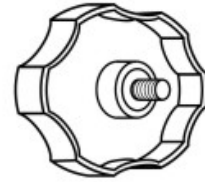
Check for the following items in your package:



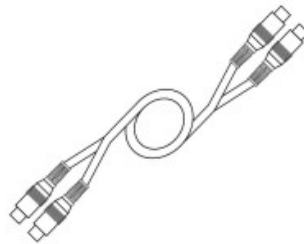
Digital 7200



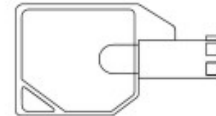
Remote Control w/Battery



Thumbscrew Knob



Playback Cable



Hard Drive Key

If any of the items are missing, please contact **RTI** at **800-995-6056**

**Note:** The Removable Hard Drive is shipped installed and locked into the **Digital 7200 DVR**

## Product Warranty

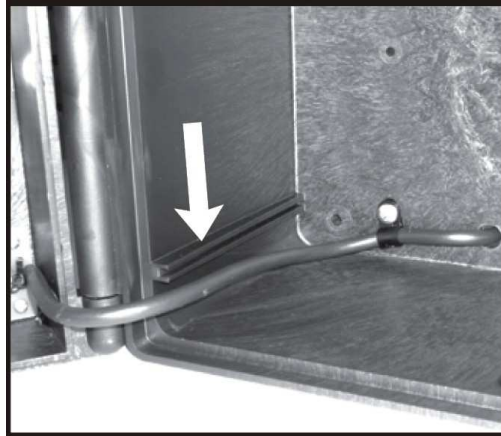
**Robotics Technologies, Inc. (RTI)** warrants this product to be free from defects in materials and workmanship for a period of one (1) year from the date of purchase. Its obligation under this warranty is limited to repairing or replacing at its own sole option any such defective products. To obtain service under this warranty, you must obtain a Return Material Authorization (RMA) number from RTI. Products must be returned to RTI with transportation charges prepaid and must be accompanied by a brief description of problem encountered and proof of date and place of purchase. This warranty does not apply to equipment that has been damaged by accident, negligence or misapplication, or has been altered or modified in any way. This warranty applies only to the original purchaser.

**Except as provided herein, RTI makes no warranties, express or implied, including warranties of merchantability and fitness for a particular purpose.** Some states do not permit limitation or exclusion of implied warranties; therefore, the aforesaid limitation(s) or exclusion(s) may not apply to the purchaser.

**Except as provided above, in no event will RTI be liable for direct, indirect, special, incidental, or consequential damages arising out of the use of this product even if advised of the possibility of such damage.** Specifically, RTI is not liable for any costs such as loss of profits or revenue, loss of equipment, costs of substitutes and claims by third parties or otherwise. This warranty gives you specific rights and you may also have other rights that vary from state to state.

## Installing the Digital 7200

1. Slide the **Digital 7200** System into the **BC2000** Enclosure, within the rails on the inside left and right walls.



2. Secure the **Digital 7200** System bracket to the **BC2000** enclosure bracket with the thumbscrew knob.



3. Plug the circular power connector from the **Digital 7200** System into the mating receptacle on the cover of the **BC2000** enclosure.



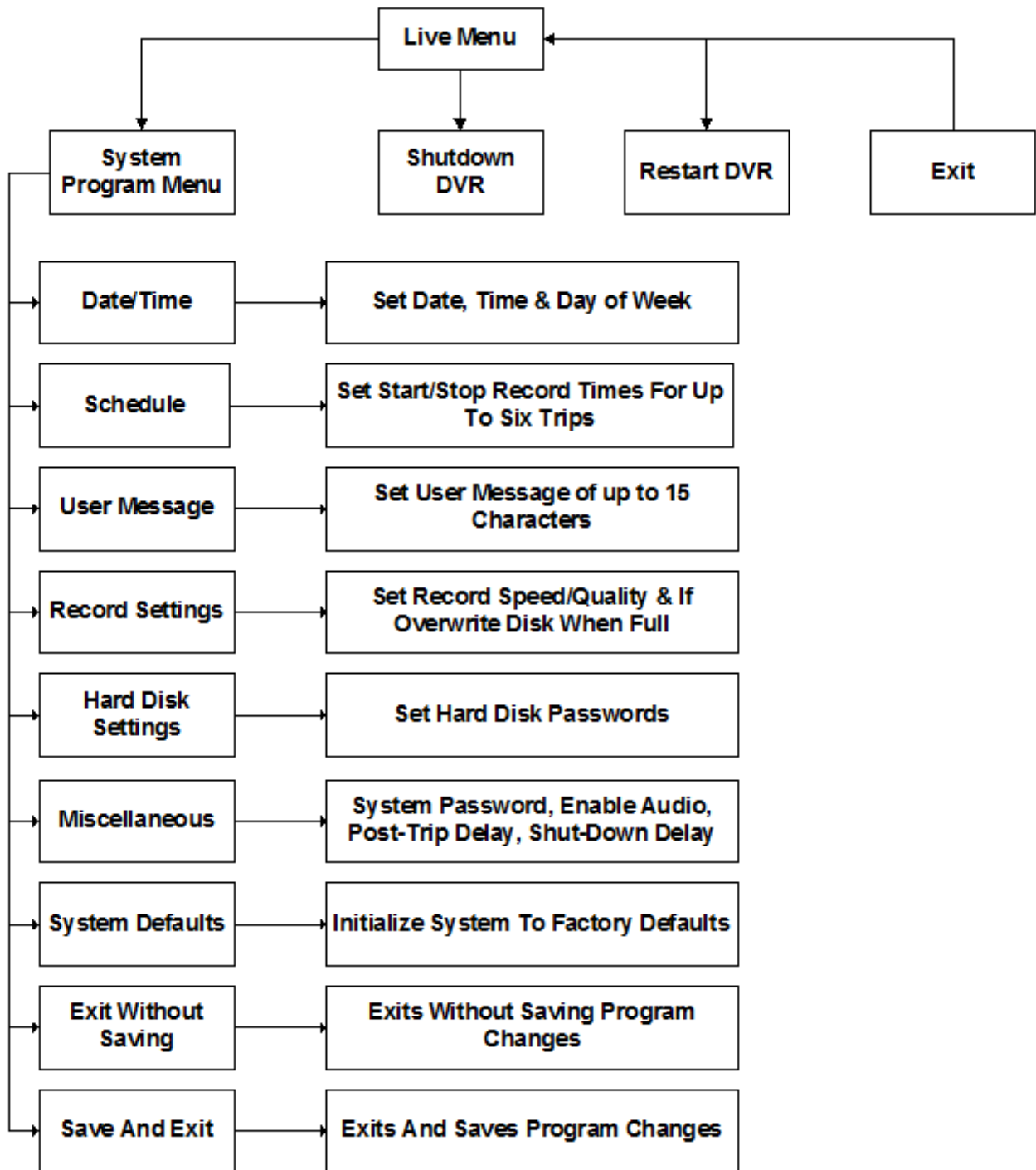
# Digital 7200 Initial Setup

## IMPORTANT!

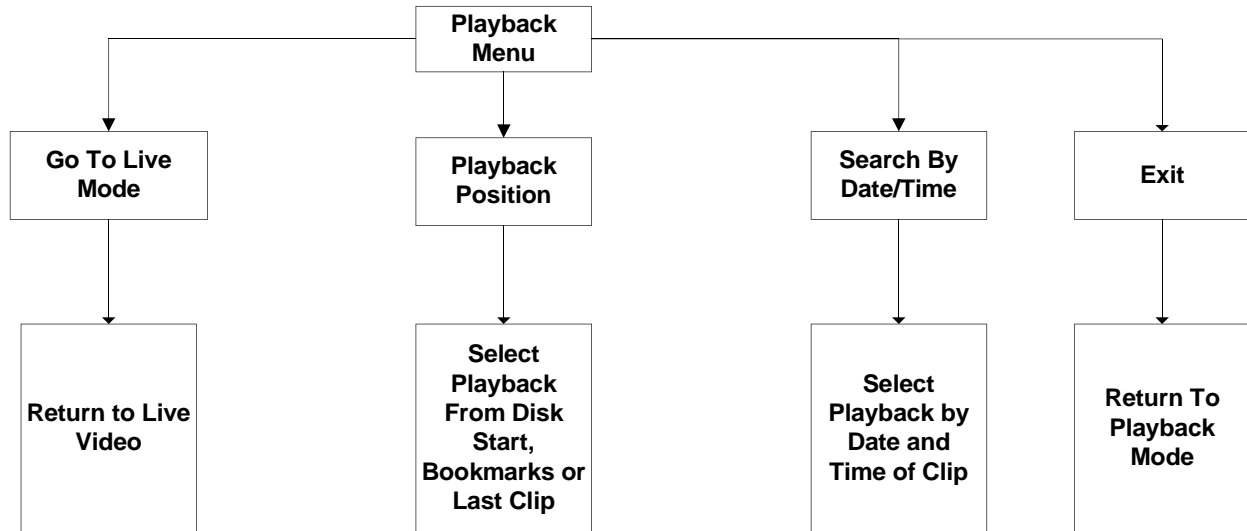
Before starting this setup, make sure that you have properly installed the removable hard drive and locked it into the Digital 7200. The Digital 7200 will not operate properly unless this has been done. The “locked” state is indicated by a lighted red LED on the front of the Hard Drive.

1. Connect a suitable video monitor or TV with A/V jacks to the **Digital 7200** Audio and Video jacks located on the left (camera) side of the unit. Make sure that the Video Out of the DVR is connected to the Video In of the monitor/TV, and that the Audio Out of the DVR is connected to the Audio In of the monitor/TV.
2. Press the **Manual Power** switch located on the left (camera) side of the **Digital 7200** to power the unit.
3. After a few moments, the monitor/TV should display a live picture of the video camera view, as well as start-up diagnostic messages.
4. When the **Digital 7200** has finished its start-up sequence, make sure that it is not in **RECORD** mode (indicated by the display of **AR** or **MR** in the lower-right corner of the screen) before attempting to program the unit. If the unit is in **RECORD** mode, then aim the provided remote control at the right (disk) side of the unit and press **STOP**.
5. Press **MENU** to enter the programming mode. The first task is to initialize the **Digital 7200** to factory defaults. This ensures that you are starting with a “clean slate”. To do so, select **System Program Menu**, then select **System Defaults**. When confirmation is requested, select “**Yes**”.
6. Once the system has been initialized, then you can navigate through the menus to configure the **Digital 7200** to your requirements. See the following pages for a comprehensive listing of the menu structures.

# Digital 7200 Live Menu Structure



## Digital 7200 Playback Menu Structure



### Notes On Menus

1. Using **ESC** to leave any menu will not save any changes you made to that menu. You must select Back and press **ENTR** to leave any menu that you made changes to. Also note that when all your programming is done, you **MUST** select **10. Save and Exit** in order for those changes to be saved.
2. Note that all values shown (except Date and Time) are the system default settings.
3. Use **▲** and **▼** on remote to select menu items and to change value of items.
4. Use **ENTR** button on remote to choose menu item and to advance to next variable when programming.

# Digital 7200 Quick Tips

**Q: How do I set the Date and Time?**

**A:**

1. Press **Menu** on the remote control.
2. Select **System Program Menu**.
3. Select **Date/Time**.
4. Use the **UP** and **DOWN** keys to change the Date and Time values.
5. Select **SET TIME** and press **ENTR**.
6. Press **ESC** to exit.

**Q: Can I disable the recording of sound?**

**A:** Yes. Pressing the **MUTE** button on the remote control will disable sound recording. This is a toggle (alternating) function, so pressing **MUTE** again will restore the recording of sound. This setting is stored in memory and controls system sound recording until changed.

**Q: What is a Post-Trip Delay, and how do I use it?**

**A:** This feature allows the continuation of recording for a set period of time after the ignition has been turned off. This is valuable for the continued recording of activity during passenger disembarkation. The duration of this delay can be set as follows:

1. Press **MENU** on the remote control.
2. Select **System Program Menu**.
3. Select **Miscellaneous**.
4. Select **Shutdown Settings**.
5. Select the **Post Trip Delay** setting.
6. Use the **UP** and **DOWN** remote keys to set the duration in minutes.
7. Press **ESC** to return to the **Miscellaneous** Menu.
8. Press **ESC** to return to the **System Program** Menu.
9. Select **Save and Exit**.

**Q: How Do I Schedule a Trip?**

**A:** Up to six programmed start and stop recording times (Trips) may be scheduled.

1. Press **MENU** on the remote control.
2. Select **System Program** Menu.
3. Select **Schedule** Menu.
4. Select the desired **Start** and **Stop** times and set their values with the **UP** and **DOWN** keys. Repeat this step for up to six trips.
5. To disable any trip, set its **Start** and **Stop** times to equal time values, or to zero.
6. Select **Schedule ON** to activate the scheduling function. **All trips may be enabled or disabled globally without disturbing the trip settings by using this setting.**
7. Select **BACK** to return to the **System Program** menu.
8. Select **Save and Exit**.

## Digital 7200 Quick Tips (Continued)

**Q: How Can I View My Recorded Clips?**

**A: There are two ways to view your recorded clips:**

1. With a video monitor/TV connected to the A/V (Phono) Jacks located on the left panel of the **Digital 7200**. This is the least practical method for normal operational use.
2. By unlocking and removing the hard drive, then plugging it into the **RTI** docking station. The docking station connects to the USB 2.0 port of a computer, and uses the **RTI** program "**RTIDiskView**" to view and save clips.

Complete instructions for docking station viewing are detailed in the **RTI Digital Video Software Manual**. **RTI Digital Video Systems** create very high quality, advanced technology MPEG4 video. Ensure that your viewing computer meets the following minimum standards:

### Minimum System Requirements

CPU	Intel Pentium 4 or equivalent @ 1 GHZ Minimum
Video Card	ATI Radeon 7500 / NVIDIA GeForce2 / Intel i865 / SIS Sabre, etc.
Operating System	Windows XP Professional
DirectX	8
Screen Resolution	1024 x 768
Installed Video Codec	DivX Decoder 8.0 or higher (Free download from <a href="http://www.divx.com">www.divx.com</a> )
Free HDD Space	2 to 4 GB for video clip storage
Memory (DRAM)	256 MB